

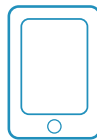
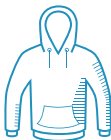
BIN MISTAKES



**Almost everything can be recovered,
but not necessarily in the recycling bin!**

Nearly 10% of materials placed in the recycling bin should not be there.

Responsible disposing of those items can be done by bringing them to a **thrift store**, an **eco-centre**, a **composting facility** or some participating retailers.



Dangerous domestic waste (car batteries, household batteries, propane tanks, paint, tires, compact fluorescent light bulbs, chemical products, etc.)

Clothing, fabrics and furs

Small electric and electronic appliances

Health care waste

Information disponible
en français à :



**MRC DES
COLLINES-DE-L'OUTAOUAIS**
mrcdescollinesdeloutaouais.qc.ca


TRICENTRIS
In Transformation | In Redistribution