

INFO LA PÊCHE

Vol. 1 • N° 5

Municipal Briefs

February 2018

THE 40th GATINEAU LOPPET COMES TO LA PÊCHE



“Loppet” means “great gathering” in Norwegian. It’s an apt description of the Gatineau Loppet, the biggest international cross country ski competition in Canada—and the country’s biggest cross-country race—with 2,500 participants each year. The great skiing celebration takes place in Outaouais—specifically, Gatineau Park and three surrounding municipalities: Gatineau, Chelsea, and La Pêche.

A FAMILY FRIENDLY EVENT

The Municipality of La Pêche is a partner for the event, which runs February 16–18, and everyone’s invited to attend or take part! Everyone? Yes, everyone! There are eight different events during the Gatineau Loppet, including a 2 km mini for kids, a family friendly 5 km classic race, and a family friendly 10 km free technique race. Then there are the 15 km classic, 27 km classic, and 27 km free technique races for amateurs, and the 51 km free technique and classic races for elite and experienced skiers. Not to mention the all-new fatbike and snowshoe courses that have been added this year, or the activities and entertainment lined up to make the event that much more festive.

ON THE INTERNATIONAL STAGE

The Gatineau Loppet, which turns 40 this year, is part of the Worldloppet circuit of 20 cross country ski marathons held every year on four continents, drawing scores of visitors from near and far. It’s a major event that’s well known on the local, provincial, and national scene, and internationally as well. Some of the promotional photos and videos for the event even feature the covered bridge near Philippe Lake, in the Sainte-Cécile-de-Masham sector. Last year, the bridge was included in the course, and the shots of cross country skiers gliding across the bridge were shared around the world! The Facebook page for the Gatineau Loppet has over 6,000 followers from twenty different countries.

REAPING THE BENEFITS

An event of this size brings significant economic benefits to the region and the host municipalities. A 2015 survey showed that locals and single-day visitors from outside the area only accounted for some 30% of total visitors. That means that 70% came from elsewhere. Of that 70%, approximately 10% were from other parts of Quebec, 10% from the United States, and 10% from abroad. The remaining 40% were from other Canadian provinces. In other words, the Gatineau Loppet mainly attracts visitors who come from outside the province or country, and who discover our municipality thanks to this wonderful event! What’s more, in addition to athletes, this skiing shindig attracts all kinds of other potential repeat visitors. And that means long term economic benefits for our region.

RACE HIGHLIGHTS IN LA PÊCHE: THE 51 KM START AT P17 AND THE SKIERS CROSSING THE COVERED BRIDGE (MASHAM SECTOR)

Wondering what you can see in La Pêche during the Gatineau Loppet? The starting point for the two main events—the 51 km technical classic (on February 17) and the 51 km free technique race (on February 18)—is parking lot P17 in Gatineau Park, which is near the Wakefield roundabout in La Pêche. And once again this year, the skiers will cross the covered bridge that leads to Philippe Lake (Sainte-Cécile-de-Masham sector). It’s a fairytale setting for amateur and elite athletes coming from the four corners of the globe to race in Gatineau.



If you’d like to see the action up close or enter one of the races as a solo skier or with your family, visit the Gatineau Loppet website at www.gatineauloppet.com or find the group on Facebook. You can register online until February 14 or in person at the main site (Mont-Bleu Secondary School, located at 389 boulevard de la Cité-des-Jeunes in Gatineau) during the entire weekend of the event, starting on February 16 at 5 p.m. (which is also when the ski fair opens). Best of luck to all the racers!



Municipal Council

- Guillaume Lamoureux**
Mayor
819 456-2161, ext. 2270
glamoureux@villelapeche.qc.ca
- Réjean Desjardins**
Ward 1
819 456-2590
rdesjardins@villelapeche.qc.ca
- Michel Gervais**
Ward 2
819 456-3746
mgervais@villelapeche.qc.ca
- Francis Beausoleil**
Ward 3
819 593-9350
fbeausoleil@villelapeche.qc.ca
- Caroline Larocque**
Ward 4
819 209-7338
clarocque@villelapeche.qc.ca
- Pamela Ross**
Ward 5
613 794-4778
pross@villelapeche.qc.ca
- Claude Giroux**
Ward 6
819 459-1344
cgiroux@villelapeche.qc.ca
- Richard Gervais**
Ward 7
819 635-2608
rgervais@villelapeche.qc.ca

Editor-in-Chief: Danièle Morisset
Editor: Evelyn Kayounga,
Communications Department
Production: Lexis Média
Distribution: Canada Post
Information: Communications
Department, Municipality of La Pêche
1 Route Principale Ouest
La Pêche, QC, J0X 2W0
Tel.: 819 456-2161
Website: www.villelapeche.qc.ca
E-mail: bulletin@villelapeche.qc.ca
ISSN 1911-7787 (bilingual-print),
ISSN 1911-7795 (en ligne-français),
ISSN 1911-7809 (online-english)



MESSAGES FROM MUNICIPAL SERVICES

GETTING RID OF CONSTRUCTION WASTE AND HHW

Renovation and building projects can be exciting, but they can be stressful too. There are expenses, long hours, and unwelcome surprises. Add in managing and disposing of waste materials and things can easily spiral out of control. But there's a way to make your project run like clockwork. All it takes is a little extra time for planning.



One approach you can consider involves *dismantling* rather than *demolishing* the existing structure. That means saving everything that can be reused instead of destroying it. You get less waste, saving money on new materials, and reduce disposal costs. A major project will still leave you with plenty to dispose of, so rent a container or take waste materials to the nearest recycling centre at your own expense. Recyc-Québec has a directory of salvage, recycling, and waste-material recovery operations (www.recyc-quebec.gouv.qc.ca/points-de-recuperation) that can steer you to a host of organizations ready not just to accept your construction waste, but to convert it into something useful.

One more thing—never mix household hazardous waste (HHW) with dry construction materials, to avoid contamination. The Municipality has three scheduled pickups for HHW in 2018: in May, July, and September. Otherwise you can take your HHW to the MRC des Collines-de-l'Outaouais transfer centre (poste de transbordement) between May 1 and September 30. See the transfer centre webpage for details (French only, at www.mrcdescollinesdeloutaouais.qc.ca/30-residus-domestiques-dangereux).

For more information, call 819 456-2161, ext. 2280 or 2287.

The Public Works Department

RAISING FARM ANIMALS AT HOME: WHAT THE BY-LAWS SAY

So, you're raising or thinking about raising farm animals on your property. But do you know what the municipal by-laws say about it?



Hobby farming as a side activity involves raising, breeding, and caring for farm animals like horses, sheep, goats, poultry, and rabbits for personal use. Hobby farming is regulated to protect the health and safety of people and animals, by preventing problems such as contamination of drinking-water wells. Here's a quick summary of what La Pêche zoning by-law 03-429 has to say about it:

• Hobby farming is a side activity, meaning that farming or breeding aren't the main use of the building or property where they're being done.

• Hobby farm authorization is on a case-by-case basis and depends on how the location is zoned, the space available (minimum of 2 hectares), the animals to be raised, and other factors.

• The building or enclosure where the animals live must be at least 50 metres from neighbouring residences and at least 30 metres from any wetlands, lakes, watercourses, or drinking-water wells.

Note: Hobby farming is not to be confused with keeping pets, kennel-type operations (more than three dogs), or pet breeding. These are all distinct categories, with different rules. So talk to municipal inspector Mireille Bertrand before you start acquiring or keeping animals. You can reach her at 819 456-2161, ext. 2254, or by emailing inspecteur1@villelapeche.qc.ca.

The Urban Planning and Environment Department

WASTE MATERIAL MANAGEMENT

Do you want to get a copy of the 2018 municipal calendar? Refer to the list of places where it is available on the municipality's website, under "New Items" (January 11 News Items) or call us at 819 456-2161, ext. 0.

| February 2018 | | | | | | | March 2018 | | | | | | |
|---------------|----|----|----|----|----|----|------------|----|----|----|----|----|----|
| S | M | T | W | T | F | S | S | M | T | W | T | F | S |
| | | | | 1 | 2 | 3 | | | | | 1 | 2 | 3 |
| 4 | 5 | 6 | 7 | 8 | 9 | 10 | 4 | 5 | 6 | 7 | 8 | 9 | 10 |
| 11 | 12 | 13 | 14 | 15 | 16 | 17 | 11 | 12 | 13 | 14 | 15 | 16 | 17 |
| 18 | 19 | 20 | 21 | 22 | 23 | 24 | 18 | 19 | 20 | 21 | 22 | 23 | 24 |
| 25 | 26 | 27 | 28 | | | | 25 | 26 | 27 | 28 | 29 | 30 | |

| |
|---------------|
| RECYCLING |
| GARBAGE |
| NO COLLECTION |

SPOTLIGHT ON STREETLIGHTS!

Spotted a burnt-out or blinking streetlight? One that stays on all day? Get it fixed! If the light is on a municipal street or road, contact Public Works at commistp@villelapeche.qc.ca or call 819 456-2161, ext. 2287. If it's on a private road, you'll need to contact the manager or owners of the road in question. And if it's on a highway—which is a provincial road—you can dial 5-1-1 to report the problem to Ministère des Transports, de la Mobilité durable et de l'Électrification des transports. Got questions about these different types of roads (municipal, private, provincial)? Read our article on page 4.

The Public Works Department

MAIN CULPRIT—THE KITCHEN!



Did you know that one out of every three residential fires starts in the kitchen? That's what Ministère de la Sécurité publique tells us. The main general causes of residential fires are distraction, improper use of appliances, and failure to follow manufacturer's safety instructions. But

public enemy #1—the most frequent cause of fires—is cooking. So remember: forewarned is forearmed. The human and material losses and damage caused by fire can be avoided if you adopt the right attitude and develop good fire-prevention habits. Here are a few of them:

- Always keep an eye on anything cooking on the stove and turn off the burner or oven if you leave the kitchen. (Face it, the moment you leave the room, your brain moves on to other things, such as "Hmmm, dirty socks, guess I should put 'em in the laundry" or "Gosh, looks like I should go get firewood before it gets dark.")

- Never heat cooking oil to its smoke point (the temperature at which an oil or fat gives off a continuous stream of smoke). Oil at its smoke point is on its way to its auto-ignition or kindling point. ("Whoosh!" if you need a hint about what that means.)

- Have an evacuation plan and practise it. Remind yourself that fires don't just happen to other people.

- Learn how to recognize and eliminate fire hazards in the kitchen and find out what to do if a cooking fire breaks out. You can look that up on the Ministère de la Sécurité publique website or call your Fire Department at 819 456-2161, ext. 2290.

The Department puts on activities for the whole family every year on Fire Prevention Day in October. Don't miss it in 2018!

The Fire Department

MUNICIPAL FORUM

Parent-Child Play Groups

Play group coaching offered free of charge by Collines en Forme. Transportation is available if necessary.

Parents - children 0-5 years old: January 15 to March 19, 9:30-11:30 a.m. at La Maison de la famille l'Étincelle (95 Route Principale Est, La Pêche).

Parents - children 0-9 months old: January 15 to March 19, 1:30-3:30 p.m. at the Ste Cécile-de-Masham CLSC (9 Chemin Passe-Partout, La Pêche).

Information: Bobbie-Lee Gervais, group facilitator, 819 643-4954; milieucef@gmail.com

Family-Friendly Activities in La Pêche!

The association Les Parents en action de La Pêche invites you and your family to join them for their activities in February.

Join us for **story time**, at 10:30 a.m. on **February 9**, at Maison de la famille l'Étincelle, 95 Route Principale. We will be telling a St-Valentine story and we will be decorating cupcakes, which is fun for all, big or small.

On **February 10**, we will go **snowshoeing** together at Lac Philippe! We will start from the parking lot at 10:15 a.m. There will be a limited number of snowshoes on loan for adults and children.

Information: follow us on Facebook, Parents en action - La Pêche, for more information on our activities.

Rupert Winter Carnival

Come enjoy our outdoor hockey tournament, sliding, and home-made chili and soups. There will be children's activities and winter games. Join us for dinner on Friday night, and then come back for some fun-time on Saturday.

When: February 9 and 10

Where: Rupert Community Centre, 24 Chemin Shouldice

Cost: Free event

Information: www.YWAR.ca

Family Fishing Derby - Loisirs Lac des Loups

The derby will take place on Lac des Loups and Halverson Lake, followed by a supper.

Cash prizes: \$1000. There will also be prizes for participating and for children.

Rules and information:

- Tickets will be sold in advance and on the day of the derby. Your ticket also gives you a chance to win some prizes.
- Participants must register their catch at the Community Centre. Each catch entitles you to a ticket for the draw.
- The deadline for registering your catch is 5 p.m.

When: February 10

Registration: \$20 (adult); \$10 (children 12 and under); supper included.

Supper only: \$10

Information: Laurette Bastien at 819 456-1007 or Pierre-Luc Tremblay at 819 360-4687

Fairbairn Town Forum

The Fairbairn House Heritage Centre wants your input on our future direction. Come for a conversation on Sunday, February 11 from 2 p.m. to 5 p.m. at the Wakefield Legion hall on Legion Road. We'll provide some music, some food and a cash bar to stimulate the flow of ideas, opinions and yes, even criticism.

Outaouais' Expo Habitat Trade Show 2018

The Municipality of La Pêche will have a stand at the upcoming Expo Habitat trade show, which will take place from March 9 to 11 at the Lac-Leamy Hilton. For further information, please call at 819 456-2161, ext. 2211 or e-mail at reception@villelapeche.qc.ca.

The Planning Advisory Committee (PAC) is looking for members

The Municipality of La Pêche is presently looking for residents of La Pêche to sit on its Planning Advisory Committee. All interested individuals are invited to submit their expression of interest in writing no later than Friday, February 16th, 2018. For further information on how to apply, please consult the notice posted on the Municipality's Internet site homepage under News Items (December 22 News Items) or call us at 819 456-2161, ext. 0.

Volunteers needed!

You want to improve our seniors' living conditions? You have the ability to inspire? You have a dynamic personality? **You have everything it takes to join the well-treatment brigade.**

Volunteers will be trained to lead workshops and will be given a kit containing the material required to organize workshops in their respective milieu. The purpose of this training is to provide the necessary tools for families, friends and neighbours, as well as merchants and seniors who witness elder abuse. The objective is to enable witnesses to recognize abuse when they see it.

Information: Geneviève Tremblay-Racette, executive assistant, Table de concertation des aînés et retraités de l'Outaouais, 819 771-8391, ext. 233, or adjointedg.tcaro@gmail.com

La Pêche Business and Association Directory

With the support of the Municipality, the Wakefield-La Pêche Chamber is presently updating its online business directory, in order to promote access to goods and services offered in the La Pêche area. To register your enterprise or organization in our directory, free of charge, send an e-mail to annuaireCWLPC@gmail.com.

March Break Camp at Centre Wakefield La Pêche

Looking for a great way to entertain your 6 to 12 year old during the March break? Look no further! Centre Wakefield La Pêche is offering a March Camp, from 9 a.m. to 4 p.m. as well as before and after hours care. You can sign up for a week or bring your child in for a few days - whatever works best for you.

Do you know awesome youth who love kids and would like to work with our camp? Please ask them to send their resume to Lindsay at Programs.Programmes@gmail.com. Applicants must be at least 15 years old.

Sentiers Wakefield Trails - Winter Walking

Sentiers Wakefield Trails wishes you a very happy 2018. Our year-round walking trails are a great place to be active and enjoy winter's natural beauty. Cleared parking areas at Centre Wakefield La Pêche, MacLaren cemetery and Fairbairn House make it easy to park your car or bike and start your walk.

Ken Bouchard, our trail leader, recommends using ice cleats on your boots when we have had freezing rain or during freeze-thaw cycles, especially on the slopes. Dogs on leashes are welcome but please remember to stoop and scoop.

Thanks

The firefighters of La Pêche and the La Pêche Food Bank committee wish to express their sincere thanks to the public for their donations during the food drive held on December 9, 2017. It was a great success. On December 16, we provided over 60 Christmas hampers to needy families in our area. Thank you to all the volunteers and our many sponsors for their generosity. To donate to the food bank throughout the year, please call 819 456-2839. We all join in wishing you health and happiness throughout the New Year.

Activity Schedule - Sports Complex

February 3: Elvis Presley tribute performance by John P. Carpenter.

The arena's restaurant is open on Thursdays, from 8 a.m. to 2 p.m.; Fridays, from 8 a.m. to 10 p.m.; Saturdays and Sundays, from 8 a.m. to 7 p.m. We serve breakfast from Thursday to Sunday.

Family skate: Sundays, 12:00 - 12:50 p.m., courtesy of Centre dentaire de Wakefield.

Public skating: Fridays, 5:00 - 6:20 p.m., courtesy of Pharmacie Uniprix, IGA Famille Charles, Centre de tri Pontiac and Giant Tiger.

Pickup hockey: Fridays, 3:30 - 4:50 p.m. (cost: \$5 per player).

Curling: Call us to sign up for the reserve team or for more information.

The spring hockey season will soon be here; call us to find out about available ice time. If you have questions or would like more information, call 819 456-1535, ext. 1 or go to www.complexe-sportif-la-peche.ca

Course: Take care of yourself

Table Autonome des Aînés des Collines' Activity

Mélanie Marcotte, Société Alzheimer Outaouais

Give yourself a break and take a deep breathe. It's time to let joy be part of your everyday life again.

When: February 22, 1:30 - 3:00 p.m.

Where: Transcollines' Conference Room, 5, Rue Principale Ouest, La Pêche

Registration: Josué Jude, 819 457-9191, ext. 242

●●● Instructions for Announcements

To announce your organization's activities, please send your texts to bulletin@villelapeche.qc.ca in a Word document, using the following format (if possible):

Event title

(2-3 lines describing the event)

When: xxx **Where:** xxx **Cost:** xxx

Information: Contact person and phone number and/or e-mail address, website (if applicable)

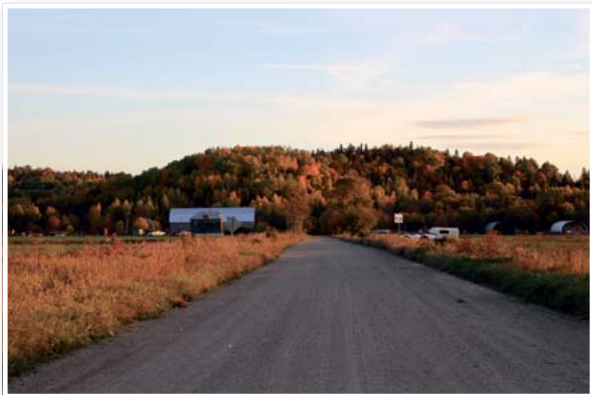
Please note that announcements will be accepted on a **first-come, first-served basis**; 3 Ads maximum per organization, so that everyone is given the opportunity to publish. Events and activities announcements will have priority over other types of announcements.

Next deadlines:

March: February 1st; April: March 8; May: April 5; June: May 3rd; July: June 7; August: July 5; September: August 9.



WHOSE ROAD IS WHOSE?



La Pêche covers an enormous stretch of territory criss-crossed by a network of highways, roads, and streets falling under various authorities. Roads may be municipal, private, or provincial. You can tell which are municipal and which are private by the colour of the road or street signs. In our Municipality, municipal roads have green signs and private roads have red ones. The difference can be important in several ways.

Municipal roads: The Municipality is responsible for improving and maintaining municipal roads and can pass by-laws affecting access, traffic, safety, use, excavation, construction, and encroachment. Contact La Pêche Public Works for any questions about municipal roads.

Private roads: Private road maintenance is entirely the responsibility of the road's owner or owners association. If something goes wrong, it's up to them to take care of it.

Provincial roads: Provincial highways, roads, and streets are the responsibility of the provincial government. The province maintains and improves them. Which La Pêche roads are provincial? These ones:

Route 366 -- Chemin Lionel-Beausoleil --
Route 105 -- Chemin Pontbriand (366) --
Autoroute 5 -- Route Principale Est (366) --
Chemin d'Eardley -- Route Principale Ouest (366) --
Chemin Edelweiss (366) --
Chemin de Sainte-Cécile-de-Masham (366)

So take any questions or complaints you might have about provincial roads to Ministère des Transports, de la Mobilité durable et de l'Électrification des transports. You can call 511 or 1-888-355-0511 or fill out the online form on the Ministry website at www.transports.gouv.qc.ca. You'll find the form under "Contact us" in the menu at the top of the page.

THE INFLUENCE OF PROVINCIAL POLICY ON WASTE MANAGEMENT PLANNING

The revised Residual Materials Management Plan of Des Collines-de-l'Outaouais RCM has been in effect since February 25, 2017, and sets the goals for municipalities in the RCM for waste (residual materials) management. The RCM's revised RMMP is based essentially on two policies. The first is the Québec government's 2011 Residual Materials Management Policy and its accompanying action plan, which targets a near complete ban on waste going into landfills and incinerators. The goal is to reach the point where all that's left to dispose of is "final waste"—what's left after every

avenue for reducing it and extracting value (waste management streams) has done its work. The Residual Materials Management Policy piggybacks for this on the Climate Change Action Plan (CCAP) with its target of a complete ban on putrescible materials (anything that can rot or decompose) in landfills by 2020. Remember the deadline and the term "complete ban", both of which dictate what municipalities can do by requiring them to reduce waste and promote reuse, recycling, reclamation, and composting.



SPEAKING OF WASTE...

Putrescible materials: Essentially leaves, grass, food scraps, sludge, and forest residue.

Residual materials: Materials and objects generated by households, industry, businesses, and institutions that is either recovered or disposed of.

Final waste: What's left over after residual materials have been sorted, conditioned, and subjected to reclamation till no further value can be derived from them and they can't be made safer and less harmful to the environment using currently available and economically feasible technology.

Reclamation: The act of finding use or value in something that otherwise would have none.

Materials recovery facility (MRF): Operation that sorts waste materials like recyclables and debris from construction, renovation, and demolition (CRD) for eventual recycling or reclamation.

Transfer centre: Place where waste is taken and transferred from the vehicle that picked it up to another vehicle, which then hauls it away for treatment or disposal.

WASTE COLLECTION DURING THE HOLIDAY SEASON

The Municipality realizes that holiday-season waste collection didn't go as planned and has identified solutions to correct the situation.